



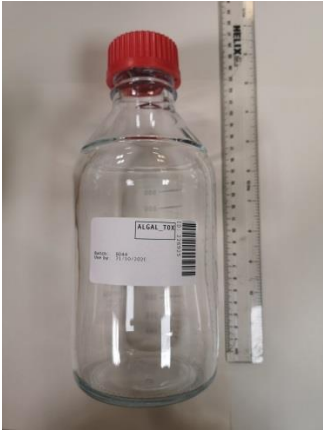
**SCIENTIFIC SERVICES CUSTOMER
SAMPLE BOTTLE GUIDE**

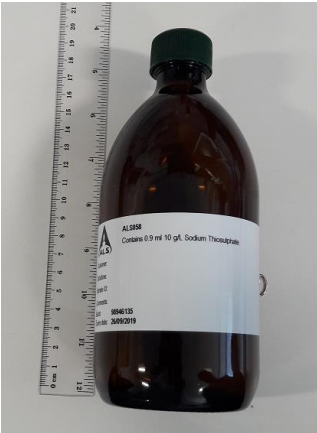
Clean Water Sampling Bottles

MCL2283 - SCIENTIFIC SERVICES CUSTOMER
BOTTLE GUIDE / BOTTLE REQUEST FORMS - JROS-8QWJSV - VERSION: 49

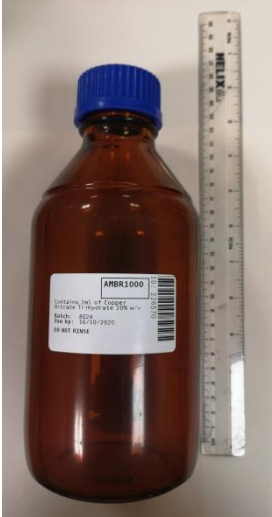
<u>ALGAL_TOX</u>	3
<u>ALS058</u>	3
<u>AMBER1000</u>	4
<u>ANION</u>	4
<u>AOC/ATP</u>	5
<u>ASCORB 250</u>	5
<u>BIOLOGY</u>	6
<u>CHEM 250</u>	6
<u>CHEM 500</u>	7
<u>CHEM STD</u>	7
<u>CLEAN TPH</u>	8
<u>CUNO</u>	8
<u>CYANIDE</u>	9
<u>DETERGENTS</u>	9
<u>DIP</u>	10
<u>EPA (1-9)</u>	10
<u>GENERA</u>	11
<u>GLASSHG</u>	11
<u>HAA9</u>	12
<u>ICP_SCAN</u>	12
<u>LEG1</u>	13
<u>LGE VOLUME</u>	13
<u>MET ANI</u>	14
<u>METALS</u>	14
<u>METALS DIS</u>	15
<u>MET LITRE</u>	15
<u>MICROT</u>	16
<u>MICROT NP</u>	16
<u>NOM 3L</u>	17
<u>PAH</u>	17
<u>PATHBOTTLE</u>	18
<u>PEST500 / PHENOL</u>	18
<u>PEST STD</u>	19
<u>PFAS</u>	19
<u>SILICA</u>	20
<u>STL13</u>	20
<u>STL 22</u>	21
<u>STL 24</u>	21
<u>STL 36</u>	22
<u>STL 53</u>	22
<u>STL 101</u>	23
<u>STL 701</u>	23
<u>TASTE</u>	24
<u>WPE</u>	24
<u>ZOG</u>	25


MCL2283 - SCIENTIFIC SERVICES CUSTOMER
BOTTLE GUIDE / BOTTLE REQUEST FORMS - JROS-8QWJSV - VERSION: 49

	<p>ALGAL_TOX</p> <p>Description: -</p> <p>1 Litre Glass Duran Bottle (labelled) - Red Capped</p> <p>Treated: - No</p> <p>Associated Tests: -</p> <p>Algal Toxins, TOX_INTRA, TOX_EXTRA</p> <p>Directions for Use: -</p> <p>Fill completely, Do Not Rinse Bottles are date stamped and must be used by the expiry date Refrigerate sample once taken</p> <p>Deliver to Lab Within: - 48 hours</p>
---	--


	<p>ALS058</p> <p>Description: -</p> <p>500ml Amber bottle with green lid.</p> <p>Treated: - Yes</p> <p>0.9ml 10g/l Sodium Thiosulphate.</p> <p>Associated Tests: -</p> <p>Acrylamide</p> <p>SUBGEOSMIB</p> <p>Directions for Use: -</p> <p>Do not rinse before filling Fill to top without over flowing Attach the cap securely without over tightening Shake to mix with preservative Refrigerate sample once taken</p> <p>Deliver to Lab Within: - 48 hours</p>
---	---


MCL2283 - SCIENTIFIC SERVICES CUSTOMER
BOTTLE GUIDE / BOTTLE REQUEST FORMS - JROS-8QWJSV - VERSION: 49

	<p>AMBR1000</p> <p>Description: -</p> <p>1000ml Amber Glass Duran Bottle – Blue Capped</p> <p>Treated: - Yes</p> <p>Copper Nitrate</p> <p>Associated Tests: -</p> <p>PAH_CIP, PAH_GCMS, PBDE, STEROID and TRICLOSAN in Raw Water ONLY.</p> <p>Directions for Use: -</p> <p>Fill to 1l glass ridge only – Do not fill completely. Refrigerate sample once taken</p> <p>Deliver to Lab Within: - 72 hours</p>
---	--

	<p>ANION</p> <p>Description: -</p> <p>150ml Amber Glass Bottle - White Cap</p> <p>Treated: - Yes</p> <p>Ethylenediamine</p> <p>Associated Tests: -</p> <p>Bromate, Bromide, Chlorate, Chlorite, Fluoride & Perchlorate</p> <p>Directions for Use: -</p> <p>Do not use if 'Sample By' date has been exceeded Fill completely, Do Not Rinse Refrigerate sample once taken</p> <p>Deliver to Lab Within: - 72 hours</p>
---	--

MCL2283 - SCIENTIFIC SERVICES CUSTOMER
BOTTLE GUIDE / BOTTLE REQUEST FORMS - JROS-8QWJSV - VERSION: 49

	<p>AOC/ATP</p> <p>Description: -</p> <p>250ml Round Clear Plastic Bottle - Blue Capped</p> <p>Treated: - Yes</p> <p>Pre-dosed with Thiosulphate</p> <p>Associated Tests: - AOC and ATP analysis</p> <p>Directions for Use: -</p> <p>Fill to below the cap - do not completely fill. Do not put the cap down and keep fingers clear of the neck and inside of the cap. Attach the cap securely without over tightening. Refrigerate sample once taken</p> <p>Deliver to Lab Within: - 24Hrs</p>
---	--

	<p>ASCORB_250</p> <p>Description: -</p> <p>250ml Amber Glass Duran Bottle – Red Capped</p> <p>Treated: - Yes</p> <p>120uL of 10% Ascorbic Acid</p> <p>Associated Tests: -</p> <p>PEST_GCMS</p> <p>Directions for Use: -</p> <p>Fill completely Do Not Rinse Bottles are date stamped and must be used by the expiry date Refrigerate sample once taken</p> <p>Deliver to Lab Within: - 48 hours</p>
---	---

MCL2283 - SCIENTIFIC SERVICES CUSTOMER
BOTTLE GUIDE / BOTTLE REQUEST FORMS - JROS-8QWJSV - VERSION: 49



BIOLOGY

Description: -

1 Litre Green Plastic Bottle - White Capped

Treated: - No

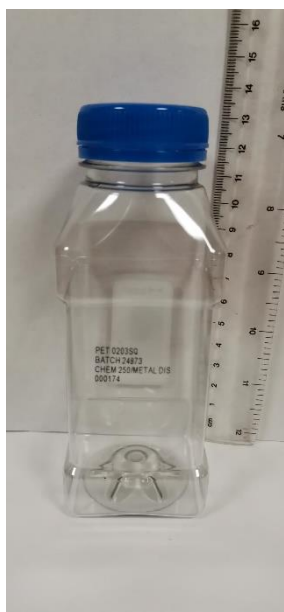
Associated Tests: -

Algal Identification, Chlorophyll A & Microscopy

Directions for Use: -

Fill completely
Refrigerate sample once taken

Deliver to Lab Within: - 72 hours



CHEM_250

Description: -

250ml Square Clear Plastic – Blue Capped

Treated: - No

Associated Tests: -

Alkalinity, Ammonium, Chloride, Nitrate, Nitrite, Soluble Reactive Phosphate, TOC, TOCSOL & UV

Directions for Use: -

Fill completely
Refrigerate sample once taken

Deliver to Lab Within: - 72 hours

MCL2283 - SCIENTIFIC SERVICES CUSTOMER
BOTTLE GUIDE / BOTTLE REQUEST FORMS - JROS-8QWJSV - VERSION: 49



CHEM_500

Description: -

500ml Square Clear Plastic Bottle – Blue Capped

Treated: - No

Associated Tests: -

Appearance, Conductivity, pH, Redox Potential, Turbidity, Colour

Directions for Use: -

Fill completely
Refrigerate sample once taken

Deliver to Lab Within: - 72 hours



CHEM_STD

Description: -

1 Litre Square Plastic Bottle - White Capped

Treated: - No

Associated Tests: -

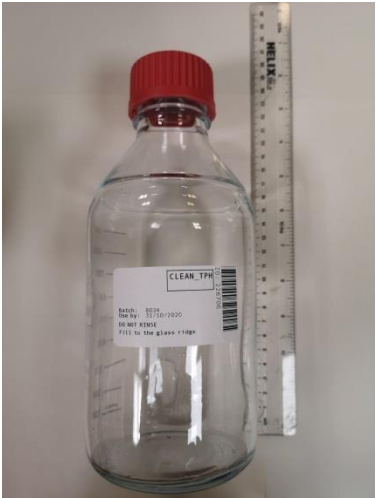
BOD, COD, Dissolved Oxygen, Kjeldahl Nitrogen, Permanganate Index, Suspended Solids, Total Solids, Total Dissolved Solids, Volatile Solids


Directions for Use: -

Fill completely
Refrigerate sample once taken

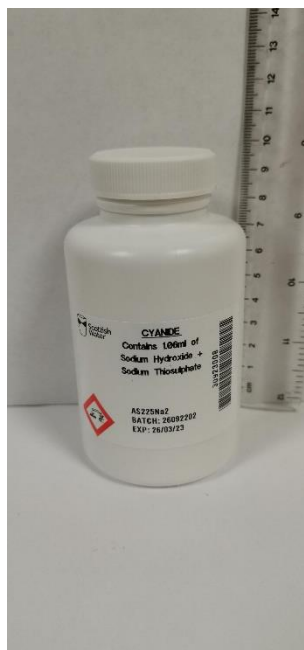
Deliver to Lab Within: - 24 hours

MCL2283 - SCIENTIFIC SERVICES CUSTOMER
BOTTLE GUIDE / BOTTLE REQUEST FORMS - JROS-8QWJSV - VERSION: 49

	<p>CLEAN_TPH</p> <p>Description: -</p> <p>1000ml Glass Duran Bottle – Red Capped</p> <p>Treated: - No</p> <p>Associated Tests: -</p> <p>TPH_GCFIDC</p> <p>Directions for Use: -</p> <p>Fill to 1L glass ridge only. Do Not fill completely Refrigerate sample once taken</p> <p>Deliver to Lab Within: - 72 hours</p>
---	--

	<p>CUNO</p> <p>Description: -</p> <p>Cuno Filter</p> <p>Treated: - No</p> <p>Associated Tests: -</p> <p>Cryptosporidium</p> <p>Directions for Use: -</p> <p>Seal filter within a sealed plastic bag Refrigerate sample once taken</p> <p>Deliver to Lab Within: - 24 hours</p>
---	--

MCL2283 - SCIENTIFIC SERVICES CUSTOMER
BOTTLE GUIDE / BOTTLE REQUEST FORMS - JROS-8QWJSV - VERSION: 49



CYANIDE

Description: -

250ml White Plastic Bottle – White Capped

Treated: - Yes

Sodium Hydroxide & Sodium Thiosulphate

Associated Tests: -

Total Cyanide

Directions for Use: -

Fill completely, Do Not Rinse
Bottles are date stamped and must be used by the expiry date
Refrigerate sample once taken

Deliver to Lab Within: - 72 hours



DETERGENTS

Description: -

500ml Square Clear Plastic Bottle – Blue Capped

Treated: - No

Associated Tests: -


Anionic Detergents

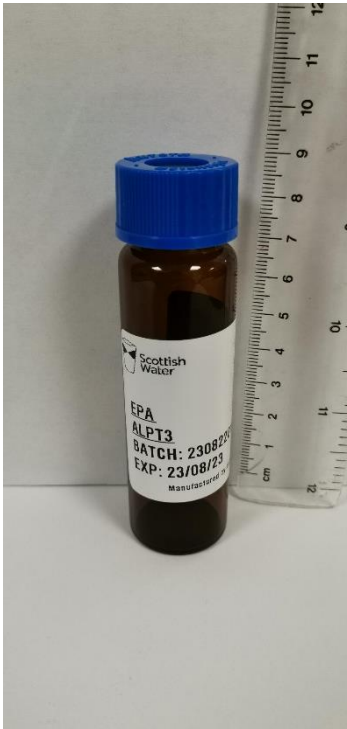
Directions for Use: -

Fill completely
Refrigerate sample once taken

Deliver to Lab Within: - 72 hours

MCL2283 - SCIENTIFIC SERVICES CUSTOMER
BOTTLE GUIDE / BOTTLE REQUEST FORMS - JROS-8QWJSV - VERSION: 49

	<p>DIP</p> <p>Description: -</p> <p>500ml Glass Duran Bottle – Blue Capped</p> <p>Zip tied neck</p> <p>Treated: - Yes</p> <p>Sodium Thiosulphate.</p> <p>Associated Tests: - Coliforms, E. Coli, Faecal Strep, Clostridia perfringens, 22°C Plate Counts, 37°C Plate Counts and Bacterial Flow Cytometry</p> <p>Directions for Use: -</p> <p>Do not rinse before filling Fill to base of neck Refrigerate sample once taken</p> <p>Deliver to Lab Within: - 24 hours</p>
---	--

	<p>EPA (1-9)</p> <p>Description: - 40ml Amber Glass Vial – Blue Capped</p> <p>Treated: - Yes</p> <p>Sodium Thiosulphate</p> <p>Associated Tests: -</p> <p>EPA = PEST_POS01 EPA 1 = THM's EPA 2 = VOC's & VOC's Scan EPA 3 = Alcohols EPA 4 = Furfural EPA 5 = PEST03 EPA 6 = PEST_02 EPA 7 = LC_TOX EPA 9 = RADON</p> <p>Directions for Use: -</p> <p>Fill to top allow overflowing ensuring no headspace or air bubbles remain after filling. Attach the cap securely. Bottles are date stamped and must be used by the expiry date. Refrigerate sample once taken</p> <p>Deliver to Lab Within: - 72 hours</p>
---	--

MCL2283 - SCIENTIFIC SERVICES CUSTOMER
BOTTLE GUIDE / BOTTLE REQUEST FORMS - JROS-8QWJSV - VERSION: 49



GENERA

Description: -

Sealed Plastic Housing with Filter

Treated: - No

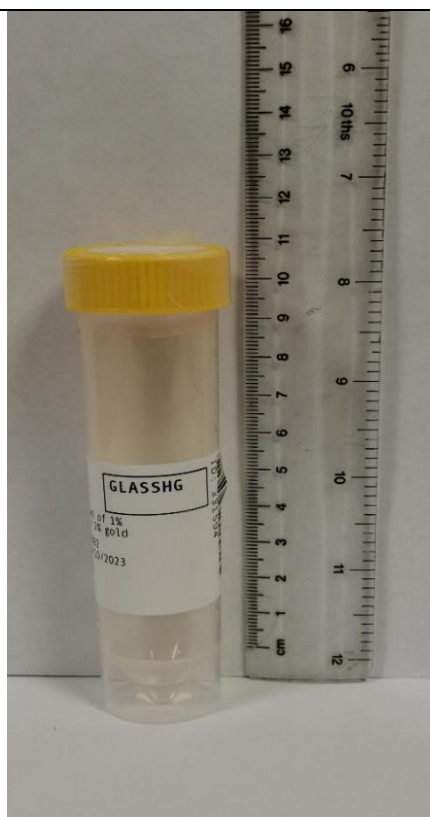
Associated Tests: -

Cryptosporidium

Directions for Use: -

Seal filter within a sealed plastic bag
Refrigerate sample once taken

Deliver to Lab Within: - 24 hours



GLASSHG

Description: -

50ml Plastic Centrifuge Tube – Yellow Capped

Treated: - Yes

Nitric Acid & Gold Solution

Associated Tests: -

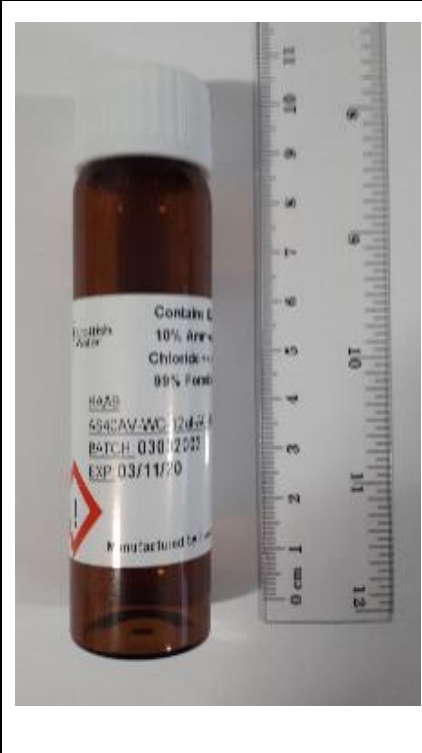
Mercury


Directions for Use: -

Fill completely, Do Not Rinse
Bottles are date stamped and must be used by the expiry date


Deliver to Lab Within: - 72 hours


MCL2283 - SCIENTIFIC SERVICES CUSTOMER
BOTTLE GUIDE / BOTTLE REQUEST FORMS - JROS-8QWJSV - VERSION: 49

	<p>HAA9</p> <p>Description: -</p> <p>40ml amber vial with white lid.</p> <p>Treated: - Yes</p> <p>12ul of 10% Ammonium Chloride and 40ul of 99% Formic Acid</p> <p>Associated Tests: -</p> <p>HAA9</p> <p>Directions for Use: -</p> <p>Do not rinse before filling Fill to top without over flowing Attach the cap securely without over tightening. Refrigerate sample once taken</p> <p>Deliver to Lab Within: - 72 hours</p>
--	---


	<p>ICP_SCAN</p> <p>Description: -</p> <p>125ml Opaque Plastic Bottle - Neutral Capped</p> <p>Treated: - No</p> <p>Associated Tests: -</p> <p>Screening test for metal analysis. Note: bottle can be used for all matrices.</p> <p>Directions for Use: -</p> <p>Fill completely</p> <p>Deliver to Lab Within: - 48 hours</p>
---	---


MCL2283 - SCIENTIFIC SERVICES CUSTOMER
BOTTLE GUIDE / BOTTLE REQUEST FORMS - JROS-8QWJSV - VERSION: 49

	<p>LEG1</p> <p>Description: -</p> <p>1 Litre Green Plastic Sterile (labelled) Bottle – Blue Capped</p> <p>Treated: - Yes</p> <p>Sodium Thiosulphate</p> <p>Associated Tests: -</p> <p>Legionella</p> <p>Directions for Use: -</p> <p>Fill completely, Do Not Rinse Bottles are date stamped and must be used by the expiry date Do Not Refrigerate Keep sample out of direct sunlight</p> <p>Deliver to Lab Within: - 24 hours</p>
---	---

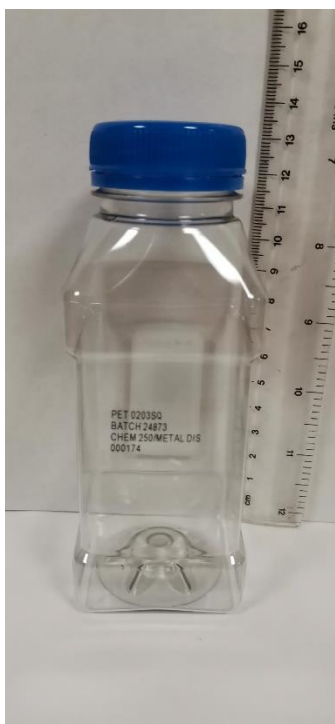
	<p>LGE_VOLUME</p> <p>Description: -</p> <p>5 Litre Plastic Jerry Can – White Capped</p> <p>Treated: - No</p> <p>Associated Tests: -</p> <p>Gross Alpha/Beta & Tritium</p> <p>Directions for Use: -</p> <p>Rinse before filling. Fill to top without overflowing. Refrigerate sample once taken</p> <p>Deliver to Lab Within: - 72 hours</p>
---	---

MCL2283 - SCIENTIFIC SERVICES CUSTOMER
BOTTLE GUIDE / BOTTLE REQUEST FORMS - JROS-8QWJSV - VERSION: 49

	<p>MET_ANI</p> <p>Description: -</p> <p>125ml Opaque Plastic Bottle - Black Capped</p> <p>Treated: - No</p> <p>Associated Tests: -</p> <p>Total Calcium, Magnesium, Sodium, Boron, Barium, Sulphate</p> <p>Directions for Use: -</p> <p>Fill completely</p> <p>Deliver to Lab Within: - 48 hours</p>
---	--

	<p>METALS</p> <p>Description: -</p> <p>125ml Opaque Plastic Bottle - Neutral Capped</p> <p>Treated: - No</p> <p>Associated Tests: -</p> <p>Aluminium, Iron, Manganese.</p> <p>Directions for Use: -</p> <p>Fill completely</p> <p>Deliver to Lab Within: - 48 hours</p>
---	---

MCL2283 - SCIENTIFIC SERVICES CUSTOMER
BOTTLE GUIDE / BOTTLE REQUEST FORMS - JROS-8QWJSV - VERSION: 49



METALS_DIS

Description: -

250ml Square Clear Plastic Bottle – Blue Capped

Treated: - No

Associated Tests: -

Dissolved tests for Aluminium, Copper, Iron, Lead, Manganese, Zinc, Arsenic, Antimony, Cadmium, Chromium, Nickel, Selenium, Phosphorous, Sulphate, Calcium, Magnesium, Potassium, Sodium, Barium, Boron & Mercury

Directions for Use: -

Fill completely

Deliver to Lab Within: - 48 hours



MET_LITRE

Description: -

1L Opaque Plastic Bottle - Neutral Capped

Treated: - No

Associated Tests: -


Copper, Lead, Zinc, Arsenic, Antimony, Cadmium, Chromium, Nickel, Selenium, Phosphorous and Uranium


Directions for Use: -

Fill to 1 litre mark

Deliver to Lab Within: - 48 hours

MCL2283 - SCIENTIFIC SERVICES CUSTOMER
BOTTLE GUIDE / BOTTLE REQUEST FORMS - JROS-8QWJSV - VERSION: 49

	<p>MICROT</p> <p>Description: -</p> <p>500ml Clear Plastic Sterile (labelled) Bottle – Blue Capped</p> <p>Treated: - Yes</p> <p>Sodium Thiosulphate</p> <p>Associated Tests: -</p> <p>Coliforms, E.coli, Faecal Strep, Clostridia perfringens, 22°C Plate Counts, 37°C Plate Counts & Pseudomonas aeruginosa, and Bacterial Flow Cytometry</p> <p>Directions for Use: -</p> <p>Fill to base of neck Do Not Rinse Bottles are date stamped and must be used by the expiry date Refrigerate sample once taken</p> <p>Deliver to Lab Within: - 24 hours</p>
---	--

	<p>MICROT_NP</p> <p>Description: -</p> <p>500ml Clear Plastic Sterile (labelled) Bottle – Red Capped</p> <p>Treated: - Yes – Sodium Thiosulphate</p> <p>Associated Tests: -</p> <p>Coliforms, E. coli, Faecal Strep, Clostridia perfringens, 22°C Plate Counts, 37°C Plate Counts & Pseudomonas aeruginosa, Bacterial Flow Cytometry and Somatic Coliphages</p> <p>Directions for Use: -</p> <p>Fill to base of neck, Do Not Rinse Bottles are date stamped and must be used by the expiry date Refrigerate sample once taken</p> <p>Deliver to Lab Within: - 24 hours</p>
---	--

MCL2283 - SCIENTIFIC SERVICES CUSTOMER
BOTTLE GUIDE / BOTTLE REQUEST FORMS - JROS-8QWJSV - VERSION: 49



NOM_3L

Description: -

3 litre plastic bottle with blue lid.

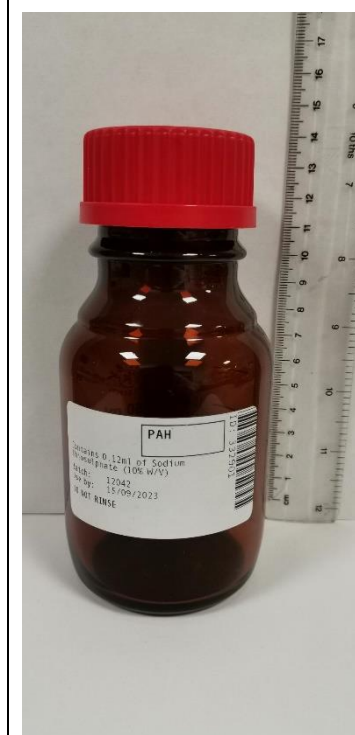
Untreated

Associated Tests:

NOM
THM_FP
HAA_FP
SUVA

Directions for Use:

Do not rinse before filling
Fill to top without overflowing
Attach the cap securely without over tightening.
Refrigerate sample once taken



PAH

Description: -

250ml Amber Glass Duran Bottle – Red Capped

Treated: - Yes

Sodium Thiosulphate

Associated Tests: -


PAH = PAH
PAH-1 = GEOS_MIB
PAH-2 = BPA_REG


Directions for Use: -

Fill completely
Do Not Rinse
Bottles are date stamped and must be used by the expiry date
Refrigerate sample once taken


Deliver to Lab Within: - 72 hours


MCL2283 - SCIENTIFIC SERVICES CUSTOMER
BOTTLE GUIDE / BOTTLE REQUEST FORMS - JROS-8QWJSV - VERSION: 49

	<p>PATHBOTTLE</p> <p>Description: -</p> <p>1 Litre Green Plastic Sterile (labelled) Bottle –Blue Capped</p> <p>Treated: - No</p> <p>Associated Tests: -</p> <p>Salmonella</p> <p>Directions for Use: -</p> <p>Fill completely Do Not Rinse Bottles are date stamped and must be used by the expiry date If for Salmonella – Refrigerate sample once taken Keep sample out of direct sunlight</p> <p>Deliver to Lab Within: - 24 hours</p>
---	---

	<p>PEST500 / PHENOL</p> <p>Description: -</p> <p>500ml Glass Duran Bottle – Red Capped</p> <p>Treated: -Yes</p> <p>Sodium Thiosulphate</p> <p>Associated Tests: -</p> <p>Intra and Extracellular Microcystin (TOX_INTRA, TOX_EXTRA, TOX_TOTAL) GCMS_SCAN & Phenols</p> <p>Directions for Use: -</p> <p>Fill completely Do Not Rinse Bottles are date stamped and must be used by the expiry date Refrigerate sample once take</p> <p>Deliver to Lab Within: - 72 hours</p>
---	--

MCL2283 - SCIENTIFIC SERVICES CUSTOMER
BOTTLE GUIDE / BOTTLE REQUEST FORMS - JROS-8QWJSV - VERSION: 49

	<p>PEST_STD</p> <p>Description: -</p> <p>1 Litre Glass Duran Bottle – Red Capped</p> <p>Treated: - Yes</p> <p>Sodium Thiosulphate</p> <p>Associated Tests: -</p> <p>STEROID in potable water ONLY</p> <p>Directions for Use: -</p> <p>Fill completely Do Not Rinse Bottles are date stamped and must be used by the expiry date Refrigerate sample once taken</p> <p>Deliver to Lab Within: - 72 hours</p>
---	--

	<p><u>PFAS</u></p> <p>Description: -</p> <p>250ml Glass Duran Bottle – Red Capped</p> <p>Treated: - Yes</p> <p>Methanol and Sodium Thiosulphate</p> <p>Associated Tests: -</p> <p>PFAS_TOTAL</p> <p>Regulator components for Potable and Raw waters test</p> <p>Directions for Use: -</p> <p>Fill to 250mL glass ridge only. Do Not fill completely Refrigerate sample once taken</p> <p>Deliver to Lab Within: - 72 hours</p>
---	---

MCL2283 - SCIENTIFIC SERVICES CUSTOMER
BOTTLE GUIDE / BOTTLE REQUEST FORMS - JROS-8QWJSV - VERSION: 49



SILICA

Description: -

250ml Square Clear Plastic bottle – White Capped

Treated: - No

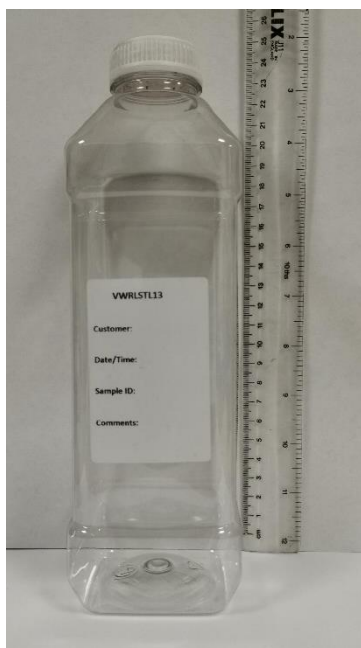
Associated Tests: -

Silica (subcontracted)

Directions for Use: -

Fill completely
Refrigerate sample once taken

Deliver to Lab Within: - 48 hours



STL 13

Description: -

1 Litre Square Plastic Bottle – White Capped

Treated: - No

Associated Tests: - Subcontracted

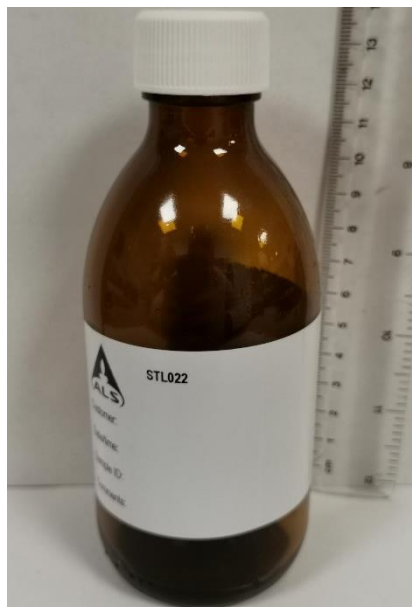
COD, Suspended Solids, Phosphorus, SRP, Ammonia

Directions for Use: -

Fill completely
Refrigerate sample once taken

Deliver to Lab Within: - 24 hours

MCL2283 - SCIENTIFIC SERVICES CUSTOMER
BOTTLE GUIDE / BOTTLE REQUEST FORMS - JROS-8QWJSV - VERSION: 49



STL 22

Description: -

250ml Amber Glass Bottle – White Capped

Treated: - No

Associated Tests: -

Chlorite

Directions for Use: -

Fill completely
Refrigerate sample once taken

Deliver to Lab Within: - 48 hours



STL 24

Description: -

125ml Round, HDPE Azlon, White Top

Treated: - No

Associated Tests: -

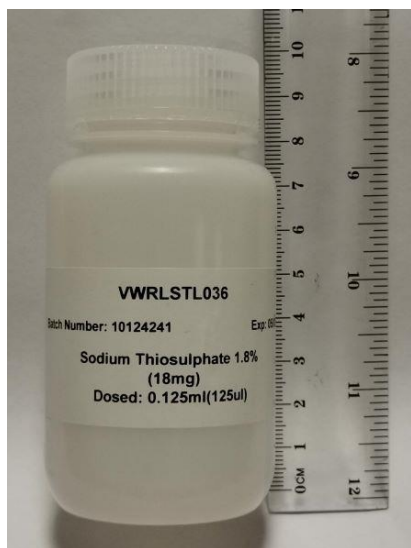
PFAS_TOTAL
Uranium
Silver
Total Metals (project specific)

Directions for Use: -

One full container is required
Fill to top without over flowing
Attach the cap securely without over tightening
Refrigerate sample once taken (PFAS_TOTAL)

Deliver to Lab Within: - 48 hours

MCL2283 - SCIENTIFIC SERVICES CUSTOMER
BOTTLE GUIDE / BOTTLE REQUEST FORMS - JROS-8QWJSV - VERSION: 49



STL 36

Description: -

White plastic bottle- Neutral Capped

Treated: - Yes

Sodium Thiosulphate

Associated Tests: -

Chlormequat

Directions for Use: -

Fill completely
Refrigerate sample once taken

Deliver to Lab Within: - 48 hours



STL-53

Description: -

50ml Amber Glass Vial - Green Capped

Treated: - Yes

Sodium Thiosulphate

Associated Tests: -

STL53 = Vinyl Chloride - **requires 2 full vials**
STL53-2 = ECH

Directions for Use: -

Do not rinse before filling
Fill to top without over flowing
Attach the cap securely without over tightening
Refrigerate sample once taken

Deliver to Lab Within: - 48 hours

MCL2283 - SCIENTIFIC SERVICES CUSTOMER
BOTTLE GUIDE / BOTTLE REQUEST FORMS - JROS-8QWJSV - VERSION: 49



STL 101

Description: -

500ml Square, Clear PET, White cap
Bottle type in LIMS shows STL101-1, STL101-2, ST101-3 different bottles are required for different tests.

Treated: - No

Associated Tests: - Subcontracted

Dissolved Metals,
Alkalinity, Suspended Solids, pH, TOC, DOC, Colour, Turbidity, Conductivity.
Total Dissolved Solids,

Directions for Use: -

Fill completely.
Refrigerate sample once taken

Deliver to Lab Within: - 24 hour



STL 701

Description: -

1l PET Bottle

Treated: - Yes

Ascorbic acid

Associated Tests: - NDMA

Directions for Use: -

Fill completely, Do Not Rinse
Bottles are date stamped and must be used by the expiry date
Refrigerate sample once taken

Deliver to Lab Within: - 72 hours

MCL2283 - SCIENTIFIC SERVICES CUSTOMER
BOTTLE GUIDE / BOTTLE REQUEST FORMS - JROS-8QWJSV - VERSION: 49



TASTE

Description: -

1 Litre Square Clear Plastic (Date Stamped) – Blue Capped

Treated: - Yes

Nitrogen Flushed

Associated Tests: -

Qualitative & Quantitative Taste and Odour

Directions for Use: -

Fill completely

Bottles are date stamped and must be used by the expiry date

Refrigerate sample once taken

Deliver to Lab Within: - 48 hours



WPE

Description: -

250ml Square Clear Plastic PET Bottle – Black Capped

Treated: - No

Associated Tests: -

SUB_AN_DET

Directions for Use: -

Fill completely

Refrigerate sample once taken

Deliver to Lab Within: - 48 hours

MCL2283 - SCIENTIFIC SERVICES CUSTOMER
BOTTLE GUIDE / BOTTLE REQUEST FORMS - JROS-8QWJSV - VERSION: 49



ZOG

Description: -

40ml Amber Glass Bottle – Black Capped

Treated: - Yes

Contains Sodium Thiosulphate

Associated Tests: -

Glyphosphate + AMPA

Directions for Use: -

Fill completely

Bottles are date stamped and must be used by the expiry date

Refrigerate sample once taken

Deliver to Lab Within: - 72 hours

-----END OF CLEAN WATER BOTTLE LIST-----